

Winter 2022

PRODUCT CATALOG



TABLE OF contents



Table of Contents



Legend



Benefits & Registration



How To:



Poinsettias Pt. 1



Poinsettias Pt. 2



Indoor Tropical
Planters Pt. 1



Indoor Tropical
Planters Pt. 2



Holiday Wreaths



Succulent Bowls



Table Top Trios



Hanging Greenery
Baskets



Outdoor Greenery
Arrangements Pt. 1



Outdoor Greenery
Arrangements Pt. 2



Tropical 2-Pks



Testimonials



Social Media



Photo Contests

**Not all plants are available everywhere.
Please reach out to your GSF rep. to see
what plants are available in your area**

LEGEND



Pet-friendly

Non-toxic for our furry friends



Full Sun

Flourishes when exposed to direct sunlight for 5+ hours each day



Part Sun

Requires 4-6 hours of indirect/morning/daily sunlight



Ease of Care

Low maintenance for the busy-bees



Indoor

Keep indoors



Outdoor

Keep outdoors





INSPIRE
CHANGE.
CREATE
COMMUNITY.

CLASSROOMS • PLAYGROUNDS • JERSEYS • TRIPS • CHARITIES
MEDICAL TREATMENT • BOOSTER CLUBS • GRAD COMMITTEES • CAMP

Benefits of *Plants*



Boosts
productivity



Improves
mental-health



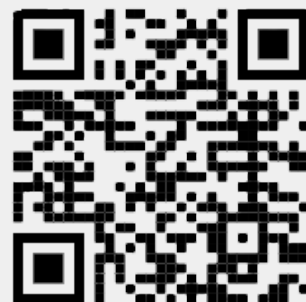
Reduces
stress-levels



Removes toxins and
purifies the air

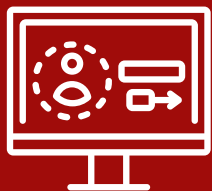
**EVERY ONE OF YOU, YOUR
CAUSES, AND
YOUR STORIES, ARE
WHAT DRIVE OUR TEAM AND
OUR PROGRAM.**

**Register Your
Team!**



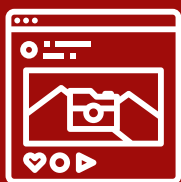
How To:

RUN A SUCCESSFUL FUNDRAISER



Create an account and/or get registered to run a seasonal fundraiser.

Pick a delivery date and begin to set up your team website.



Launch your website and start sending out order forms and advertise on social media and through email.

Place your team's order on the team website 14 days prior to your delivery date.



Delivery day!

We will deliver your plants to the location you requested.

Sort and hand out the orders to all of your customers.



Enjoy your profits!



Poinsettias

A CLASSIC
ADDITION TO
YOUR HOLIDAY
DECOR



Our #1 Holiday favorite!

Brighten up any room with a colorful poinsettia. Arrives ready to display in a color-coordinated pot cover. Poinsettias are the perfect festive touch for the holidays.



CARE TIPS



- The 6.5" Poinsettias like ~1 cup of lukewarm water whenever the soil feels dry to touch. Do not let plants sit in the water
- Need a minimum of 6 hrs of indirect sunlight each day. You can place them where the sun filters through blinds
- After the plant blooms, fertilize with a balance, all-purpose fertilizer
- Will thrive in room temperatures between 20°-21° C (68°-70° F). Do not expose to winds, drafts, excessive heat, and cold temperatures
- Approx. Height: **6.5"**: 14-16", **10"**: 20-24"

Width: **6.5"**: 12-16", **10"**: 20-24"

available everywhere

www.growingsmilesfundraising.com/winter

Indoor Tropical Planter

ADD A BIT OF
CLASS WITH
SIMPLE
COLOURS



A must-have for everyone!

A selection of holiday-colored Tropicals featured in a beautiful holiday-themed tin planter will be the best decision you make this Winter.

Possible Varieties include:

*Croton: petra, Sedum: coral reef, Pilea: red stem, Ivy, Kalanchoes (red, white, yellow, or orange),
Neanthe Belle Palm, Mini Cypress, Gaultheria, Frosty Fern*



CARE TIPS |

- Tropicals do not need lots of water. Wait until soil on top 2" has dried completely before watering again
- Prefer indirect sunlight. Tropical plants can burn if there is direct sunlight. Light through partially closed blinds is recommended
- Benefits from periodic fertilizing. Can be fertilized every 2-3 weeks from Spring to Summer and every 3-4 weeks during Winter
- Prefer a high acidic, loose, well-draining soil that is high in organic matter
- Thrives in humid/warm locations. They do not do very well under 15°C or in drafty conditions
- Approx. Plant Height: 14-16"; Tin Planter Length: 11", Width: 7"

available everywhere

www.growingsmilesfundraising.com/winter

Holiday Wreath

THE OUTDOOR MUST-HAVE



Seasons Greetings!

High-quality sourced live greenery that is hand-tied and dipped for extended freshness. Complimenting the greenery are red berries, pine cones, and bows.

Possible Varieties Include:

Noble Fir, Juniper Berries, Pine Cones, Novelty Berries, Red Ribbons

CARE TIPS



- Mist the wreath generously a few times throughout the week
- Does not need light to thrive, but needs to be protected from the wind
- Is meant to be outdoors, but if displayed indoors, be sure to mist more to prevent the wreath from drying out
- Approx. Diameter: 24"

available everywhere

www.growingsmilesfundraising.com/winter

Succulent Bowl



AN EASY
ADDITION TO
YOUR HOLIDAY
TABLE

The perfect gift that goes well in any home!
This popular succulent arrangement is featured
in a classy white ceramic bowl.

Possible Varieties Include:

Echevaria- Perle Von Nurnburg, Miranda Red, Purpusorum, Affins and Pulidonis. Sedum/Sedeveria- Hens and chicks, Hako Chocokate Ball, Tetractinum Coal Reef, and Lemon Angelina. Senecio (not pet-friendly)- Mandraliscae "Blue"

CARE TIPS



- Succulents don't like being over-watered. Let them dry out before watering. Sometimes the bathroom may have too much moisture for them to thrive
- Full sunlight is preferred all the time. Rotate succulents every 2 weeks for all to get adequate light
- Fertilize with a balanced fertilizer once in the Spring and once in the Summer
- Succulents prefer porous sandy soil that is well-draining
- Place outside when temperatures reach 15°C (they can handle heat very well)
- Approx. Height: 10-12". The ceramic bowl is 9" in diameter.

NOT available everywhere

*Please reach out to your GSF rep to see if this
product is available in your area*

www.growingsmilesfundraising.com/winter

Table Topper



THE PERFECT READY-MADE GIFT

A simple favorite in our holiday product line-up!
Novelty picks, pot covers, and bows complete
this festive table topper.

Possible Varieties include:

Mini Cypress, Gaultheria, Frosty Fern, Lemon Cypress

CARE TIPS



- Water well when the soil feels dry to the touch. Remove pot covers to drain - do not let plants sit in excess water
- Prefers indirect sunlight at least 6 hours each day
- Fertilize with a balanced, all-purpose fertilizer at the end of the season
- Protect from any wind and extreme temperatures. Keep indoors close to 20°C or warmer
- All pots are ~4" in diameter
- Gaultheria Approx. Height: 6", Width: 4-5"
Frosty Fern Approx. Height: 6", Width: 4-5"
Cypress Approx. Height: 10-13", Width: 4"

NOT available everywhere

*Please reach out to your GSF rep to see if this
product is available in your area*

www.growingsmilesfundraising.com/winter



Hanging Greenery Bough

UNIQUE
HANGING
DECOR

Celebrate with a merry bough of greenery!

Hanging on the outside of your front door or leaning on the patio, this premium arrangement of greenery will catch everyone's eye. Featured in a vintage style burlap bag.

Possible Varieties include:

Noble Firs, Princess Pine, Gaultheria, Bow Western, Red Cedar

CARE TIPS



- Mist a few times a week with a spray bottle until you see water beads
- Does not need light to thrive, but should be protected from wind
- Keep outside as it will dry out and turn brown if left indoors
- Approx. Height: 30-36", Width: 10-13"

available everywhere

www.growingsmilesfundraising.com/winter

*Outdoor
Greenery
Arrangement*

A LARGE
FESTIVE
GREENERY
ARRANGEMENT



Welcome guests to your home in-style!
This planter features a large display of live greenery in
a simple pot. With a burst of color from bows and
berries you and your guests will love looking at this
arrangement.



CARE TIPS



- Keep the branch stems submerged in water and check water levels daily
- Does not need light to thrive, but should be protected from wind
- Meant to be outdoors but if it is displayed indoors, be sure to check water levels daily
- Approx. Height: 30-36", Width: 16-20"

available everywhere

6" Ceramic
Tropical 2-Pk



A GIFT FOR
YOU AND A
GIFT FOR ME

An easy-to-care-for duo!

A set of 2 indoor premium Tropicals in stylish ceramic pots. Perfect for a gift, housewarming, or a "one for you, one for me" scenario! Varieties may vary.

CARE TIPS



- Tropicals do not need lots of water. Wait until soil on top 2" has dried completely before watering again
- Prefer indirect sunlight. Tropical plants can burn if there is direct sunlight. Light through partially closed blinds is recommended
- Benefits from periodic fertilizing. Can be fertilized every 2-3 weeks from Spring to Summer and every 3-4 weeks during Winter
- Prefer a high acidic, loose, well-draining soil that is high in organic matter
- Thrives in humid/warm locations. They do not do very well under 15°C or in drafty conditions
- Ceramics are 6" in diameter

NOT available everywhere

Please reach out to your GSF rep to see if this product is available in your area

www.growingsmilesfundraising.com/winter

15



SEE WHAT TEAMS SAY

"This couldn't be an easier fundraiser. Everything is recorded, tracked, and communicated!
Would lead this fundraiser again in a heartbeat."

Danielle - Lethbridge, AB



"These plants sell themselves!
This is our most successful fundraiser by far. Growing Smiles Fundraising staff are fantastic, the drivers are helpful, and we look forward to working with them again next season."

Alesha - Okotoks, AB



"Great fundraiser to run!
So many great resources to assist a group with selling the products. The whole process is seamless! The products themselves are gorgeous. A really good fundraiser to raise money!"

Nuala - Grande Prairie, AB



Join Us Online

Join us on Facebook for our Greenhouse Live series, and get an inside look at where our beautiful plants are grown, while learning more about how to run a successful fundraiser!



facebook.com/growingsmilesfundraising



Join us on Instagram for all the latest Growing Smiles updates, important date reminders, contests, and to learn even more about our Summer/Fall flowers and plants!



instagram.com/growingsmilesfundraising



Photo Contests

We encourage you to continue sharing your love for plants by sending in photos or tagging us on social media posts. Our photo contest gives you the chance to win \$200.00!

Don't forget to have fun and be creative!



Winter 2021 Winner:

Sea to Sky Montessori - Squamish, BC

**Please note that we may use submitted photos on our website, on our social media pages, and/or in other small promotions.*



CONTACT

www.growingsmilesfundraising.com

1-866-806-1523

info@growingsmilesfundraising.com

**49150 CASTLEMAN ROAD,
CHILLIWACK BC, V2P 6H4
CANADA**

